



PHOTOMONTAGE VIEW

Figure A9.3.18b

Viewpoint Information

Grid Reference 444845E 1174877N
Ground Height 61m
Viewer Height 2m
Included Angle 90°
Viewing Distance 410mm
Images digitally altered to the equivalent of 35mm camera with 50mm lens.

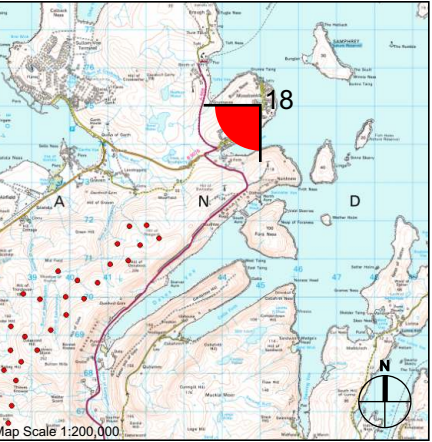
Layout Information

Based on Layout T127 - April 2010
Blade Length 55m
Hub Height 90m
Nearest Visible Turbine 4.1km
Number of Tips Visible 22*
Number of Tips and Hubs Visible 20*
Turbine Visibility 216° to 233°

*The information provided ignores the screening effects of forestry and other intervening objects.

Landscape Character Area

F2 - Nucleated Settlements



Client:			
Project:	Viking Wind Farm		
Title:	Viewpoint 18 View from Firth / Mossbank		
Scale:	N.T.S.	Date:	Jan 2009

Revised for ES Addendum - April 2010

