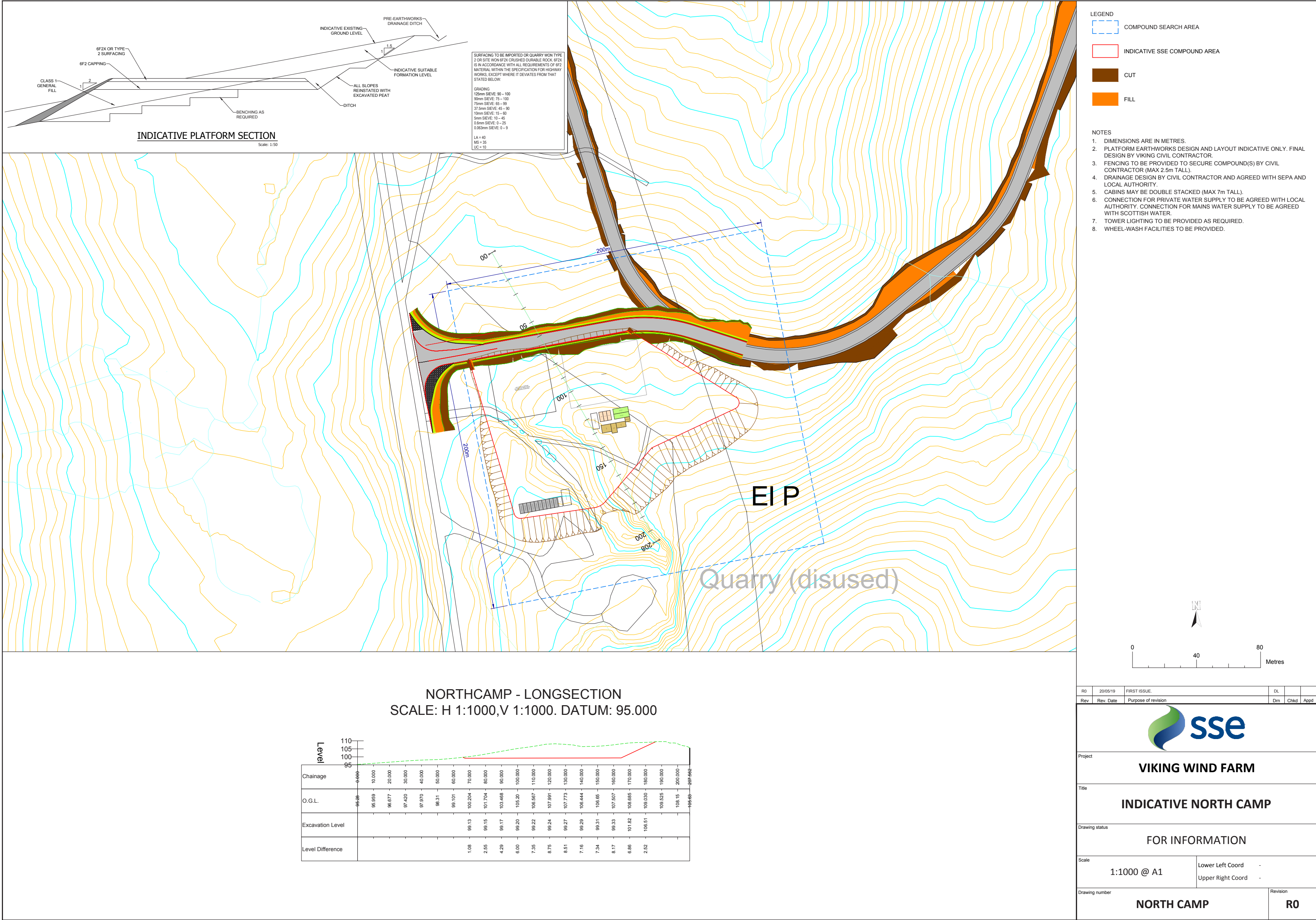


The North Compound - Scar Quilse, near Voe



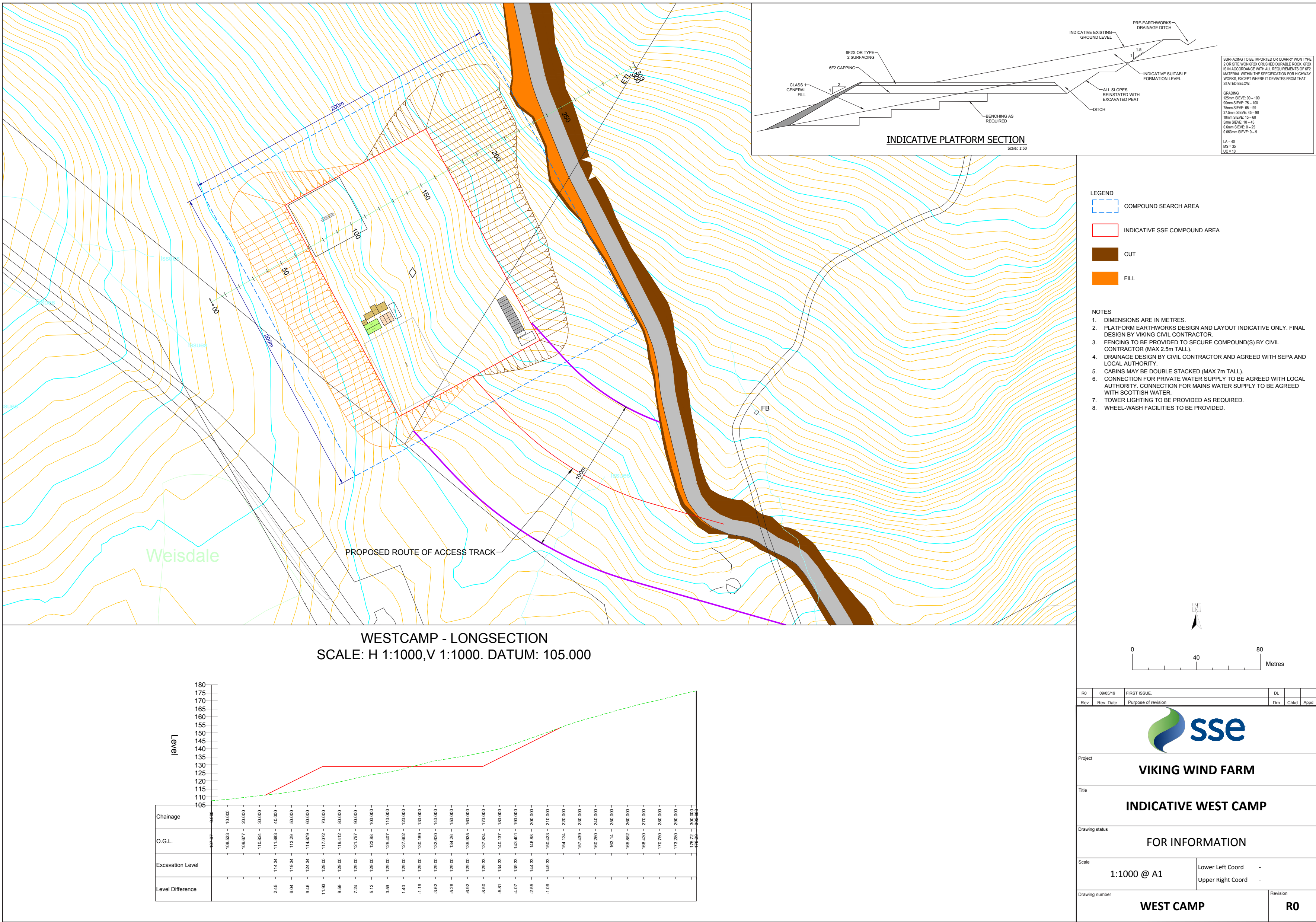
The North Compound is planned for an area to the east of the main A970 road, about two miles south of Voe, where access will be taken to build turbines south of Voe and Laxo, covering an area of around 4 hectares.



The West Compound - Scord of Weisdale



The West Compound is planned for an area above the A971 West Side road on the hill between Weisdale and Tresta. A new track will be built to access the turbine sites between Weisdale and Aith, covering an area of around 4 hectares.



A photograph showing a road construction or maintenance site on a grassy hillside. In the foreground, a two-lane asphalt road with white lane markings curves to the left. A silver van is driving away from the camera on the road. To the right of the road, on the grassy slope, there is a large, rectangular concrete structure under construction, supported by wooden scaffolding. Several utility poles with power lines are visible along the road and across the hillside. The sky is clear and blue.

[illegible]

Wind farm benefits

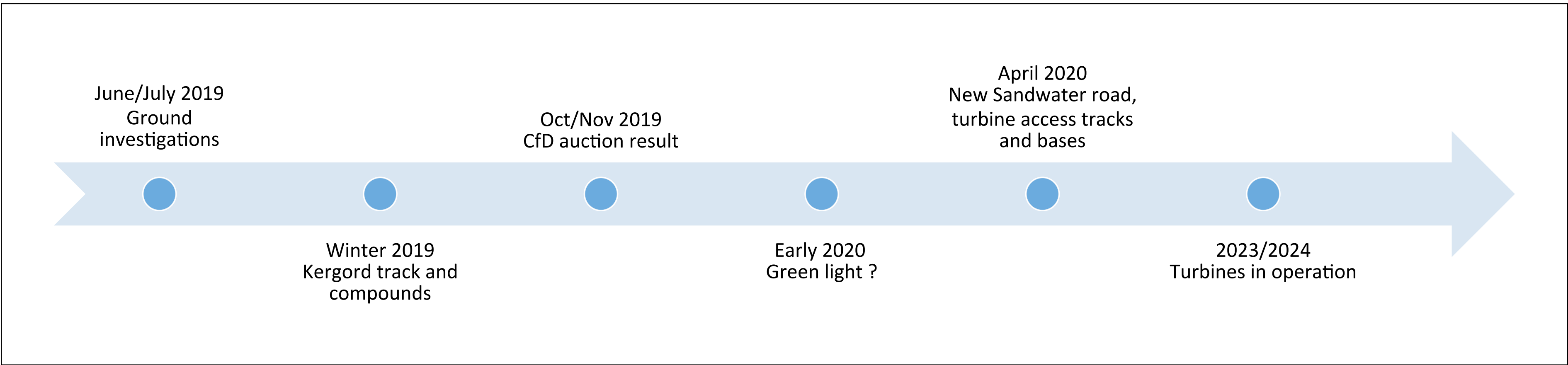
Viking Energy expects to pay up to £2.2 million a year into a fund for use to benefit the community and boost community council budgets. Over a 25-year lifespan this would total some £55m in voluntary payments for use in Shetland.

Income will also be generated for Shetland from operation of the wind farm, including through supply contracts, compensation payments to crofters and landowners and the creation of over 30 full-time jobs and over 140 jobs during construction.



View down the Mid Kame ridge and the loch at Petta Water.

Countdown to wind power production in less than 5 years . . .



Viking Energy is setting up groups to liaise with the community and environmental interest groups.

The Viking Community Liaison Group will meet for the first time this month to discuss the work planned over the summer. Initially it will involve representatives of the four community councils that are set to have wind turbines in their areas plus representatives of the crofting common grazings within the wind farm site. The group will add members as it goes along to ensure that people most affected by wind farm and road construction are able to get detailed information and have their concerns heard and answered.

Shetland Windfarm Environmental Advisory Group (SWEAG) will be set up once the Habitat Management Plan (HMP) has been approved. It will include representatives of a range of land and environmental interests who will oversee delivery of the plan to encourage important bird populations and tackle the erosion of peatland.



Looking north from the top of Wormadale.

Your views

Please feel free to make any comments on the compound plans or other aspects of the project in writing today at the hall or by email to **info@vikingenergy.co.uk** or in writing to:

Viking Energy
The Gutter's Hut
North Ness Business Park,
Lerwick,
ZE1 0LZ

Once the planning applications for the compounds are submitted to the Shetland Islands Council, comments can be submitted to it in writing.



Looking towards the head of Weisdale Voe with the Mid Kame ridge and Nesting beyond.