

Wireline diagram produced using OS Panorama (DTM) data.
Contains Ordnance Survey data © Crown copyright and database right 2010

Figure A9.3.18a

Viewpoint Information

Grid Reference 444845E 1174877N
Ground Height 61m
Viewer Height 2m
Included Angle 90°
Viewing Distance 300mm
Images digitally altered to the equivalent of
35mm camera with 50mm lens.

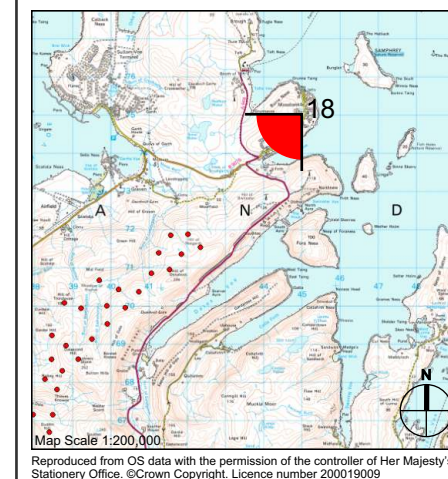
Layout Information

| | | |
|-----------------------------------|--------------|-----|
| Based on Layout T127 - April 2010 | | |
| Blade Length | 55m | |
| Hub Height | 90m | |
| Nearest Visible Turbine | 4.1km | |
| Number of Tips Visible | | 22* |
| Number of Tips and Hubs Visible | | 20* |
| Turbine Visibility | 216° to 233° | |

*The information provided ignores the screening effects of forestry and other intervening objects.

Landscape Character Area

F2 - Nucleated Settlements



Client:



| | |
|----------|-------------------------|
| Project: | Viking Wind Farm |
|----------|-------------------------|

| | |
|--------|--|
| Title: | Viewpoint 18 View from Firth / Mossbank |
|--------|--|

| | | | |
|--------|--------|-------|----------|
| Scale: | N.T.S. | Date: | Jan 2009 |
|--------|--------|-------|----------|

Revised for ES Addendum - April 2010

