

## **APPENDIX A12.2**

# **BACKGROUND NOISE MEASUREMENTS**

## APPENDIX A12.2 BACKGROUND NOISE LEVEL REGRESSION ANALYSIS

Chart 12.1 Laxobigging, Quiet Daytime

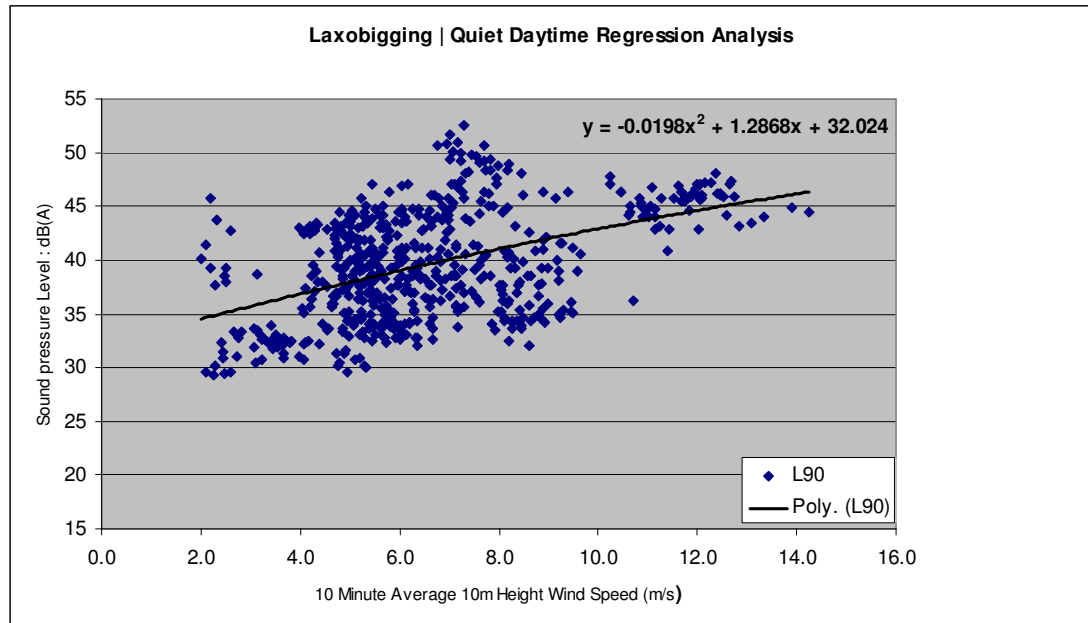


Chart 12.2 Laxobigging, Night-time

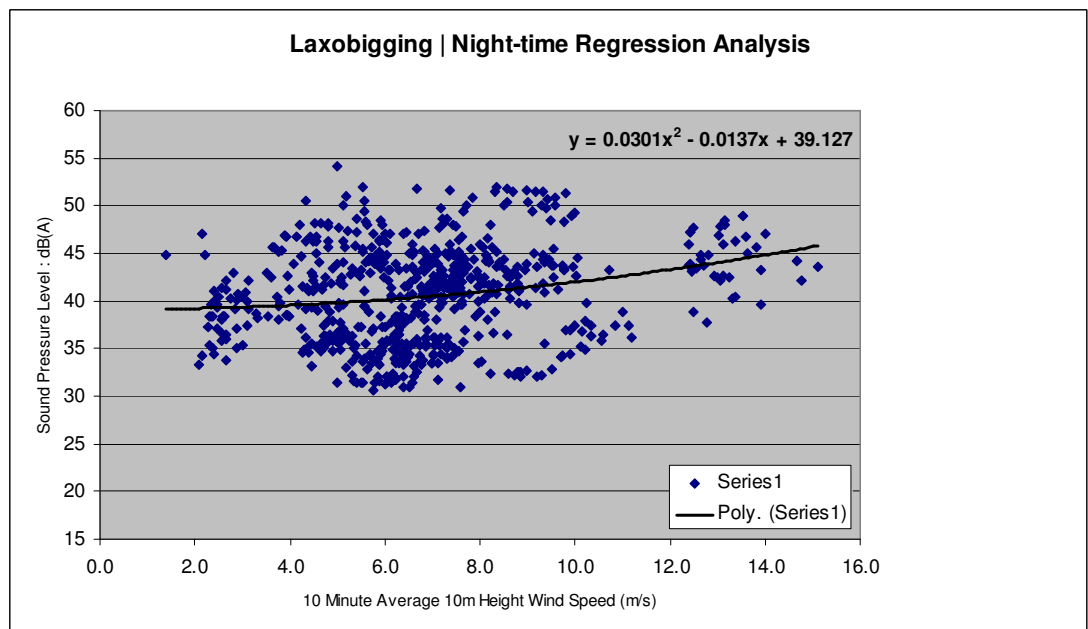


Chart 22.3 East Burrafirth, Quiet Daytime

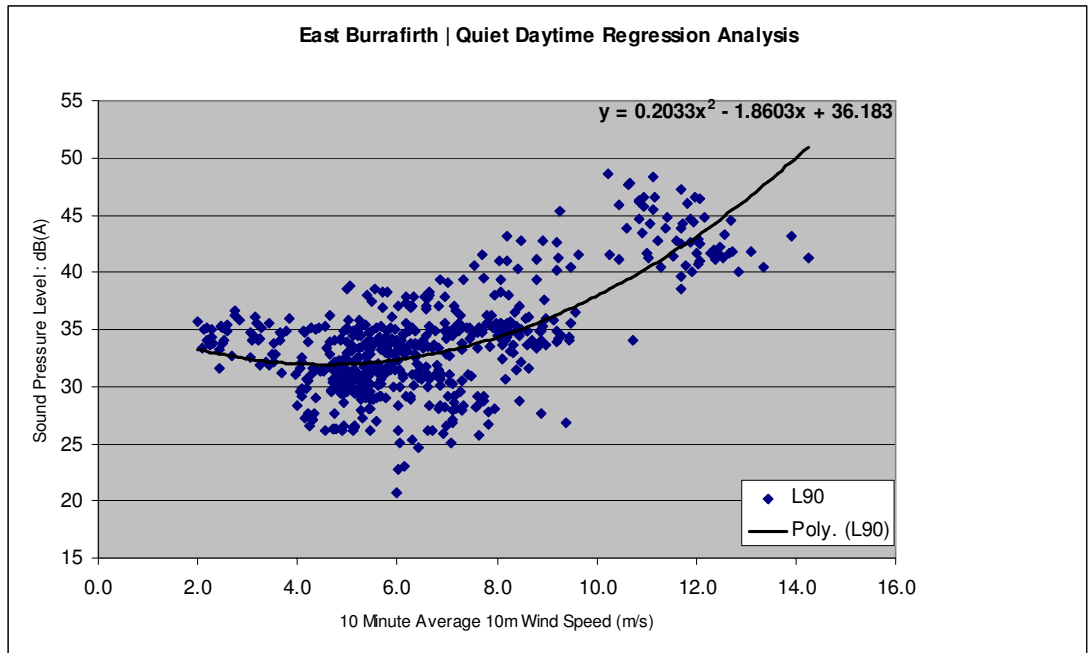


Chart 12.4 East Burrafirth, Night-time

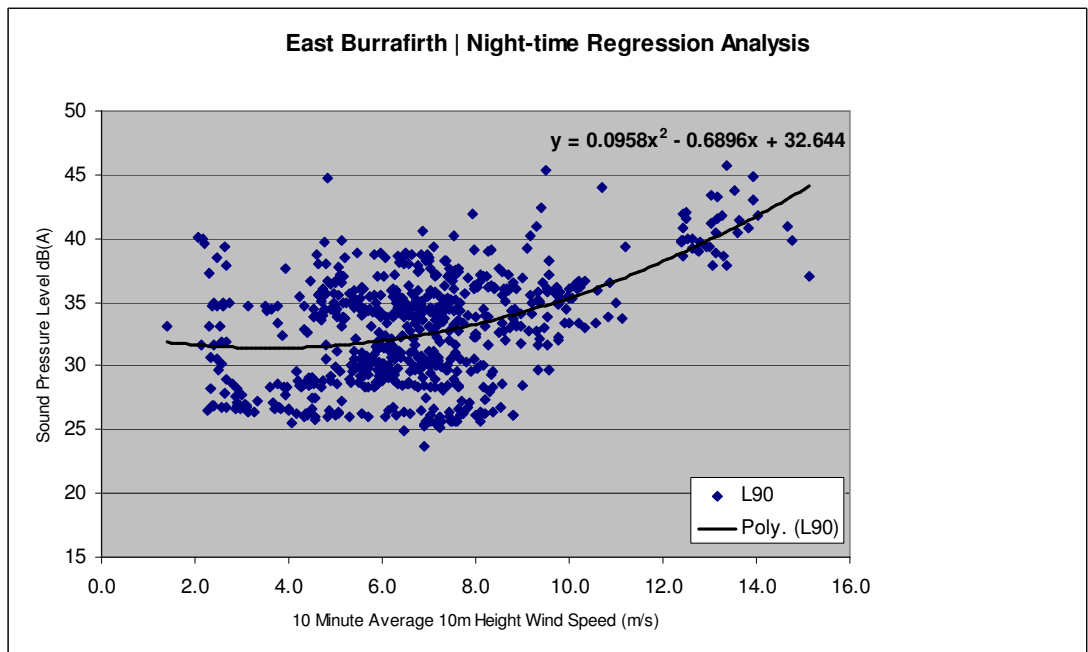


Chart 32.5 Moorfield, Quiet Daytime

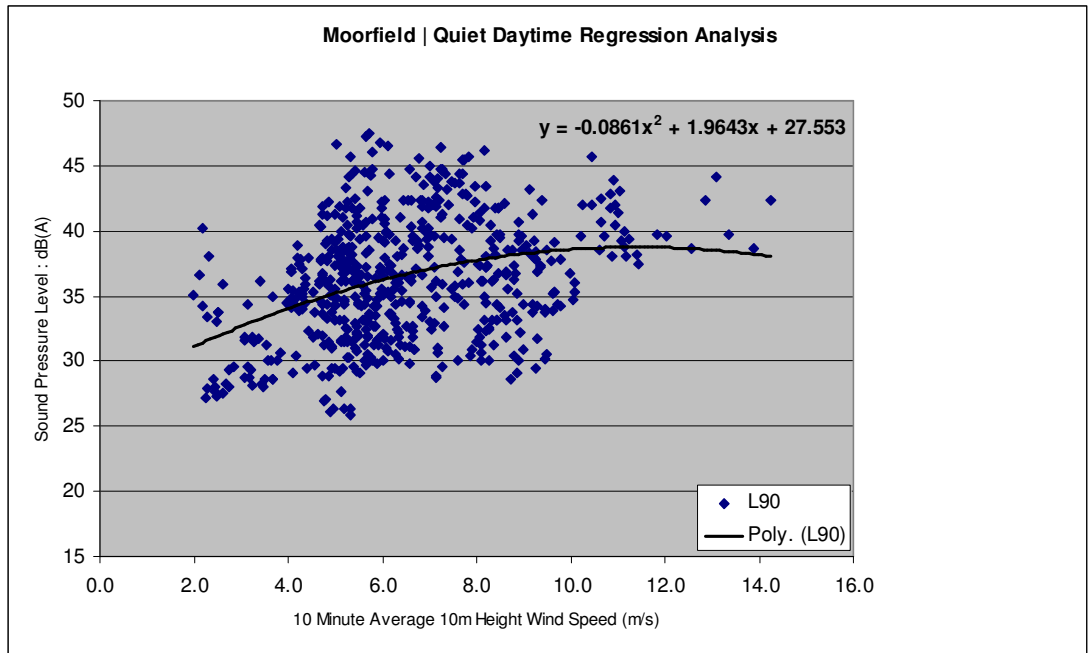


Chart 42.6 Moorfield, Night-time

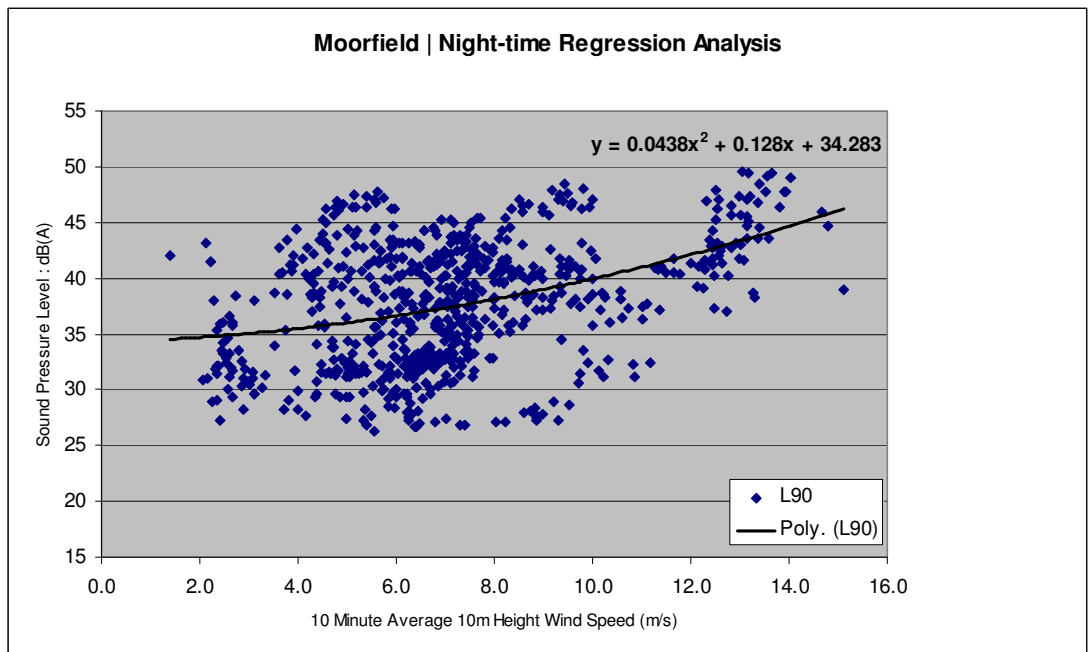


Chart 52.7 Grutin, Quiet Daytime

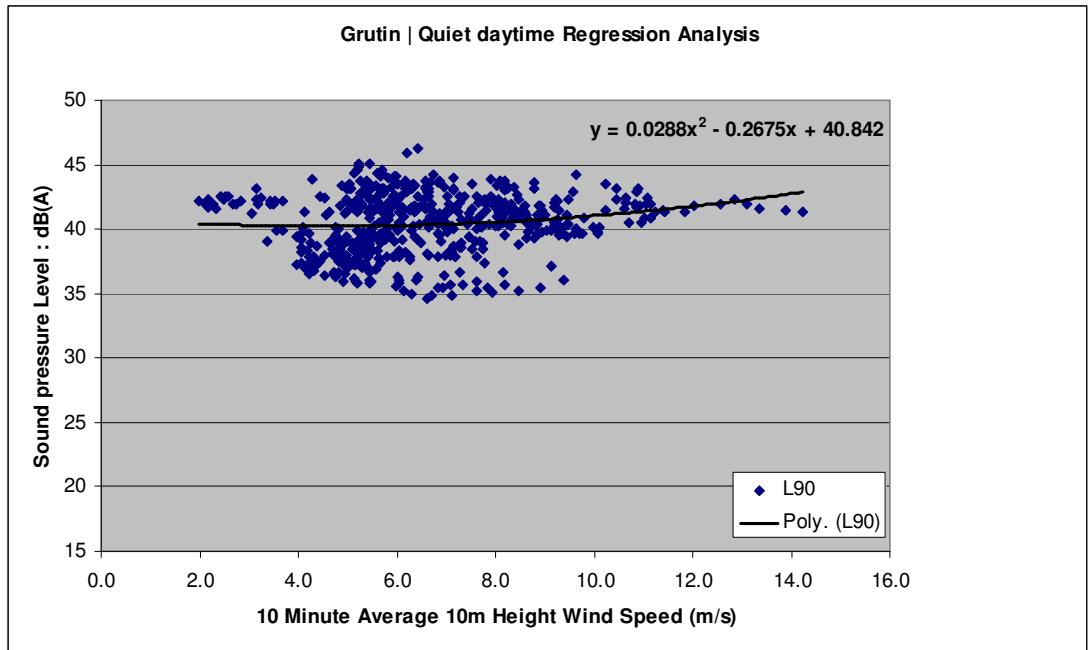


Chart 62.8 Grutin, Night-time

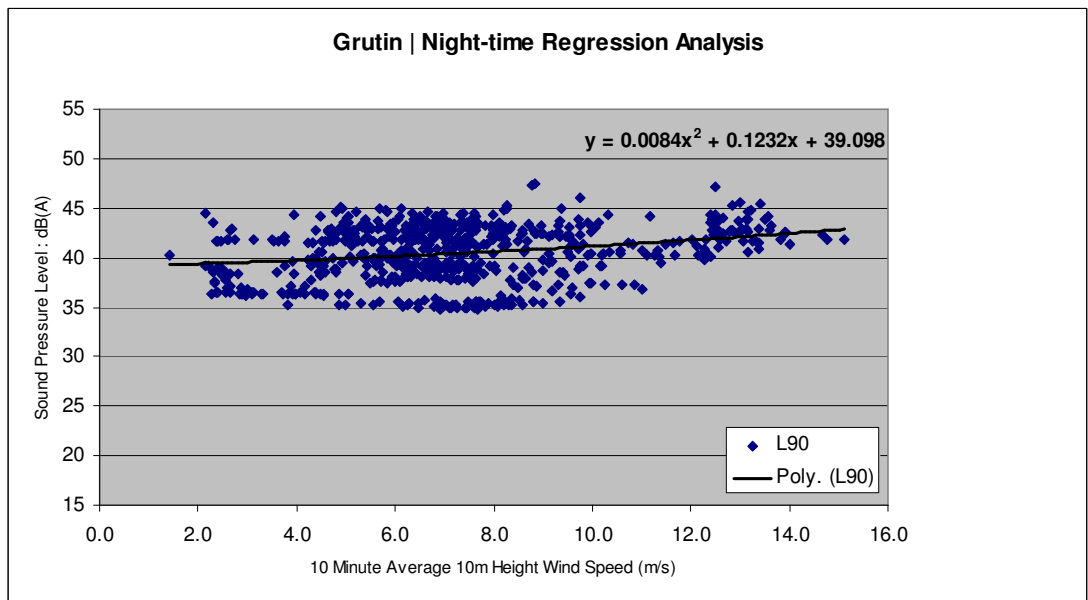


Chart 72.9 Dury, Quiet Daytime

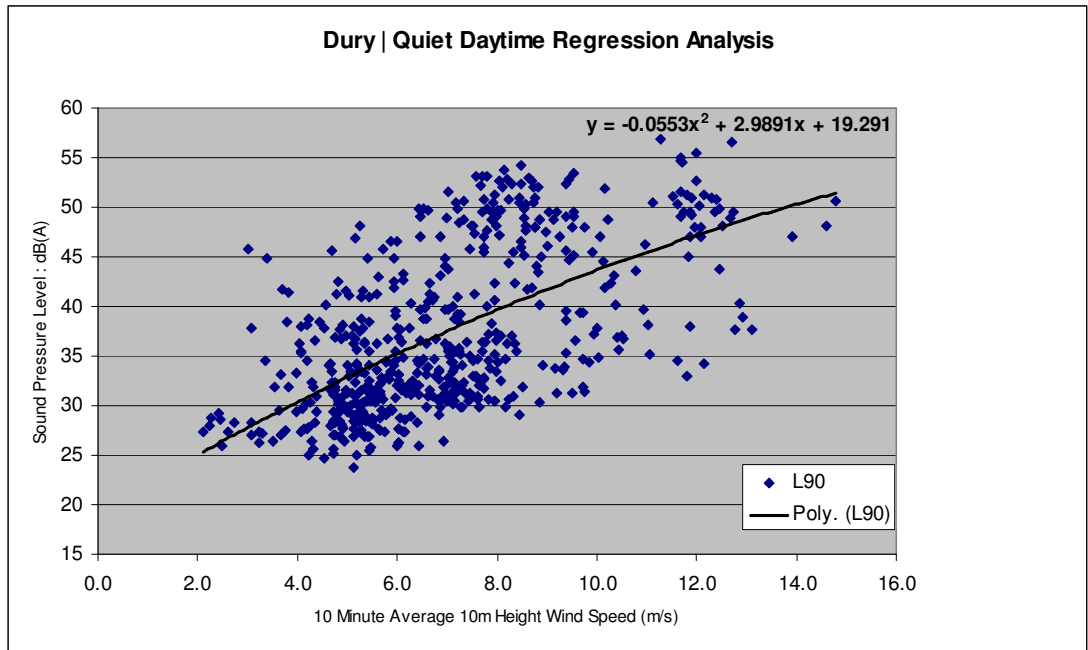


Chart 82.10 Dury, Night-time

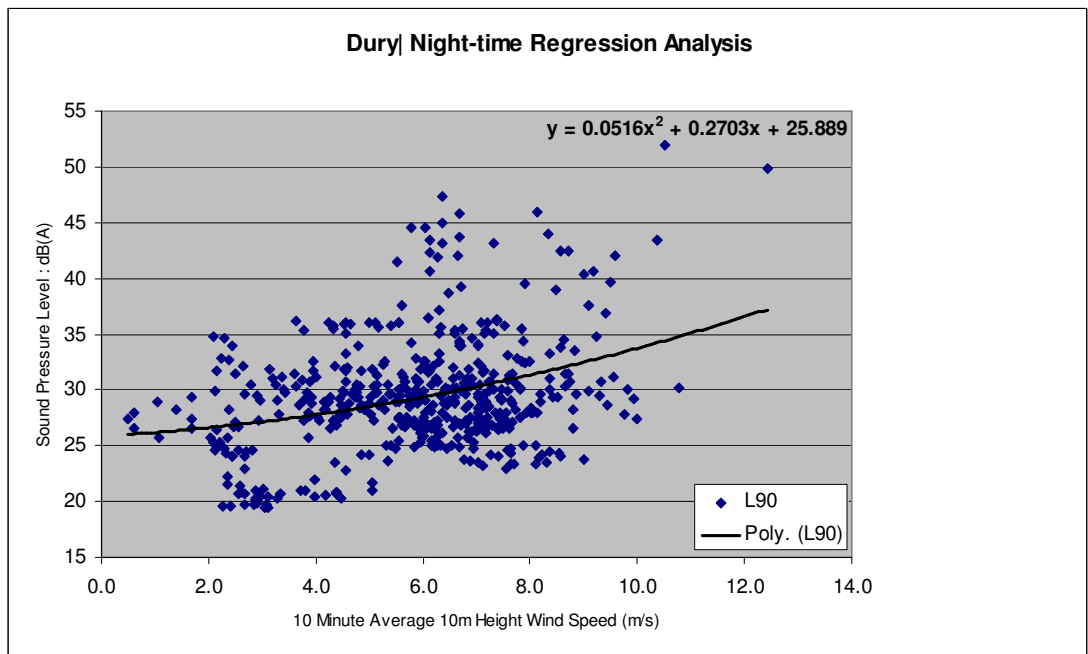


Chart 92.11 Newing, Quiet Daytime

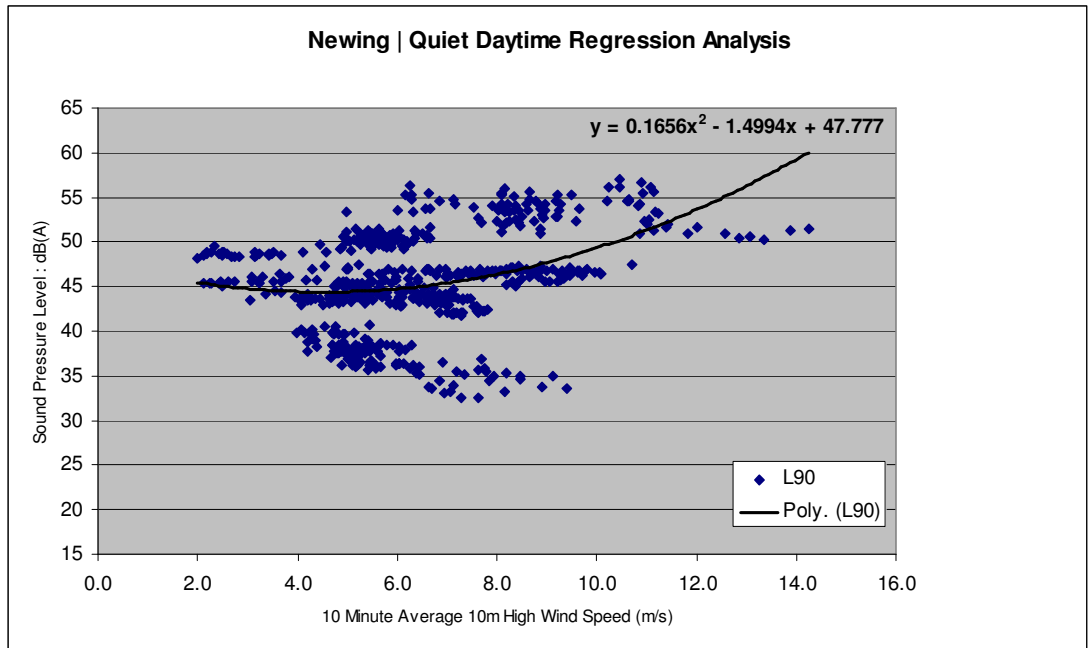


Chart 102.12 Newing, Night-time

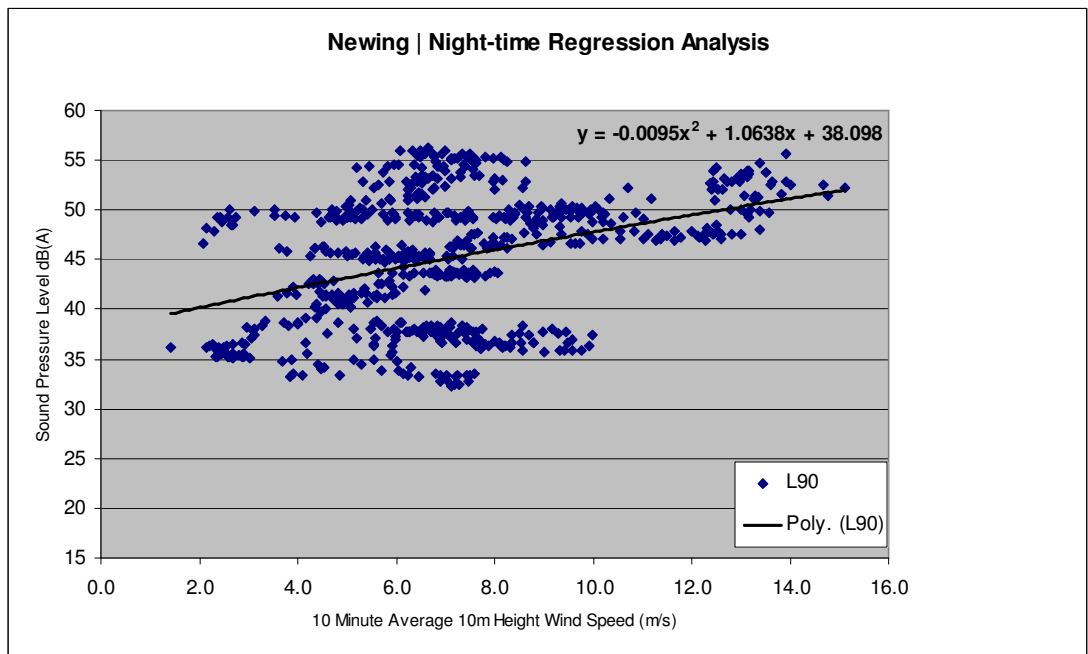


Chart 112.13 Catfirth, Quiet Daytime

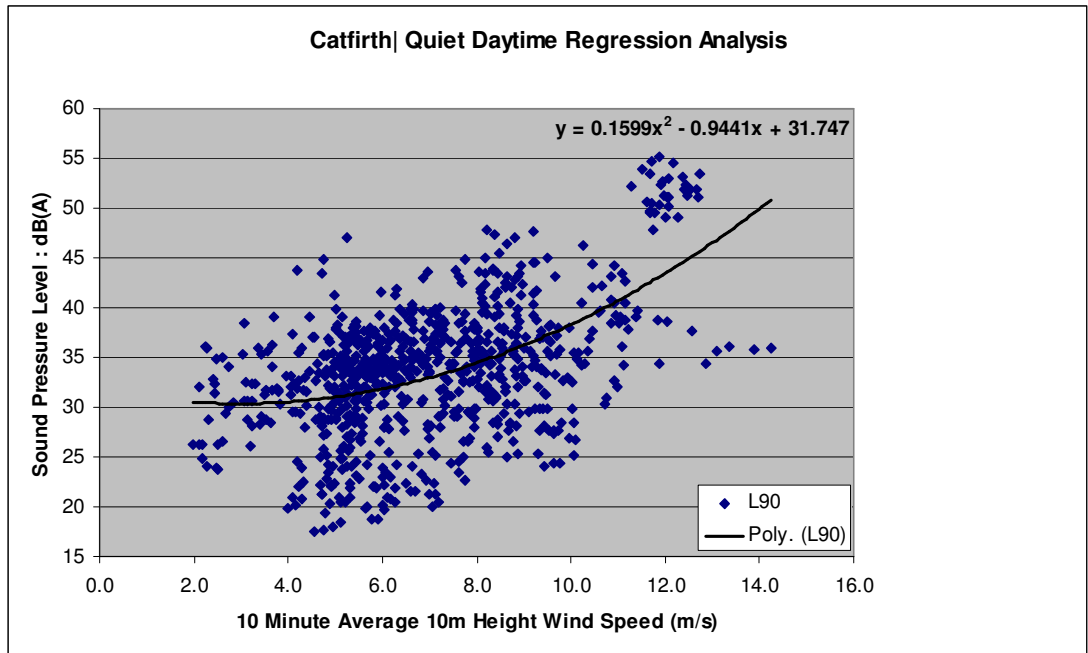


Chart 122.14 Catfirth, Night-time

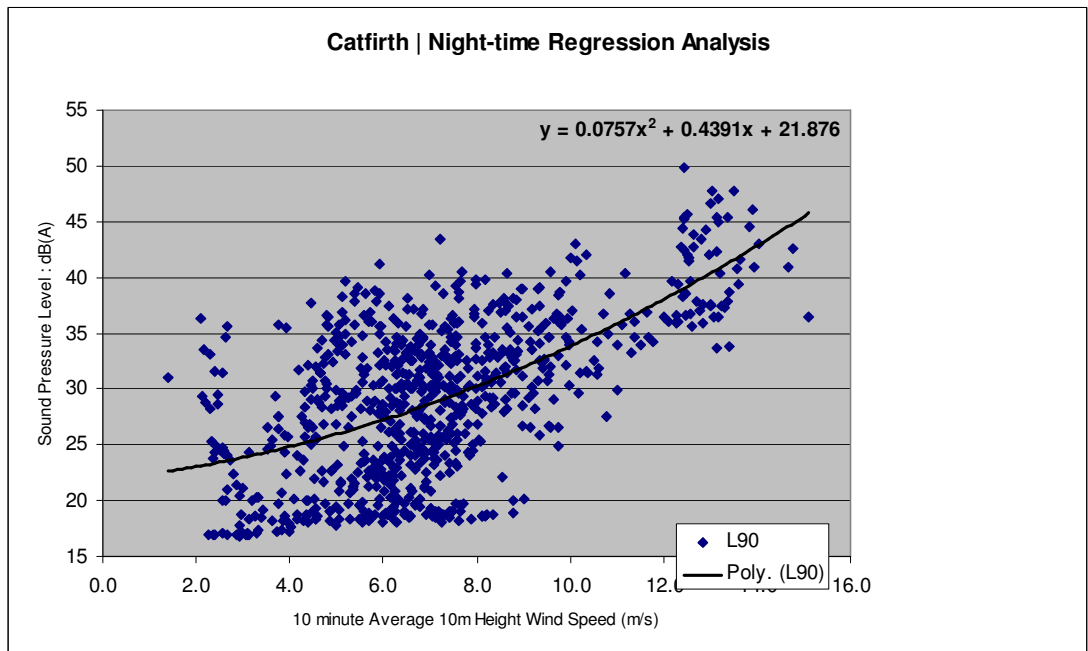




Chart 132.15 South Setter, Quiet Daytime

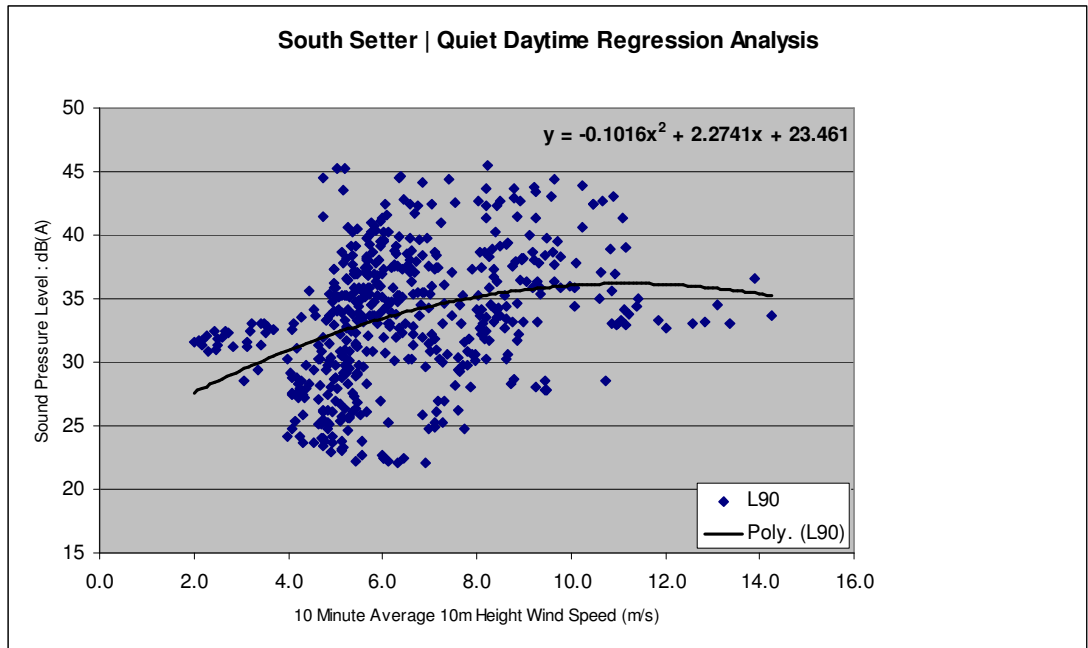


Chart 142.16 South Setter, Night-time

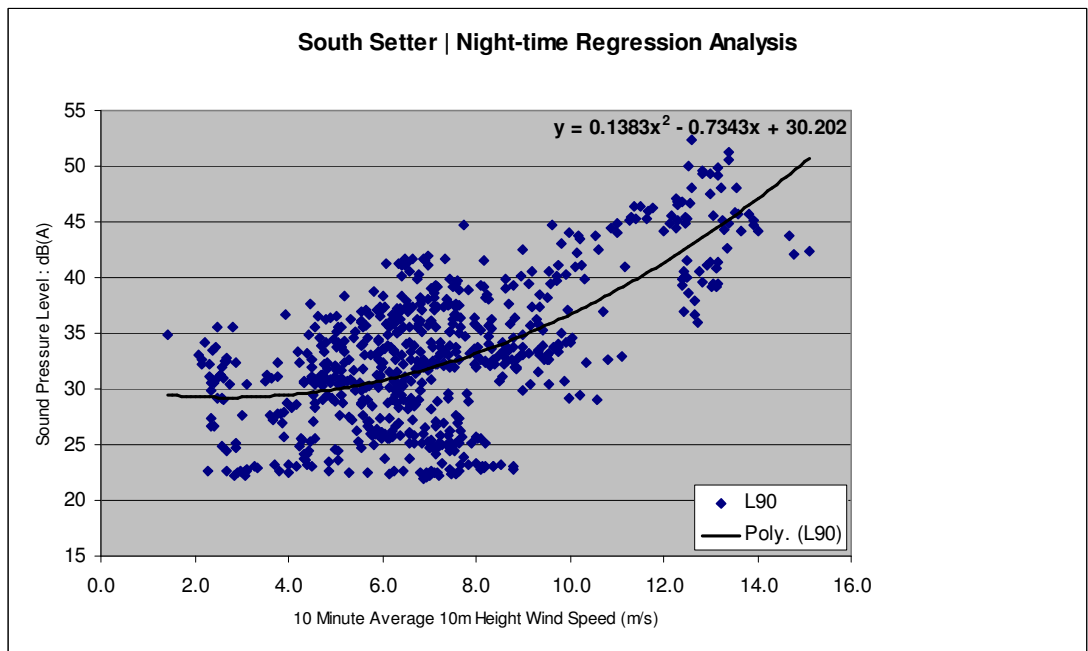


Chart 152.17 Sand Water, Quiet Daytime

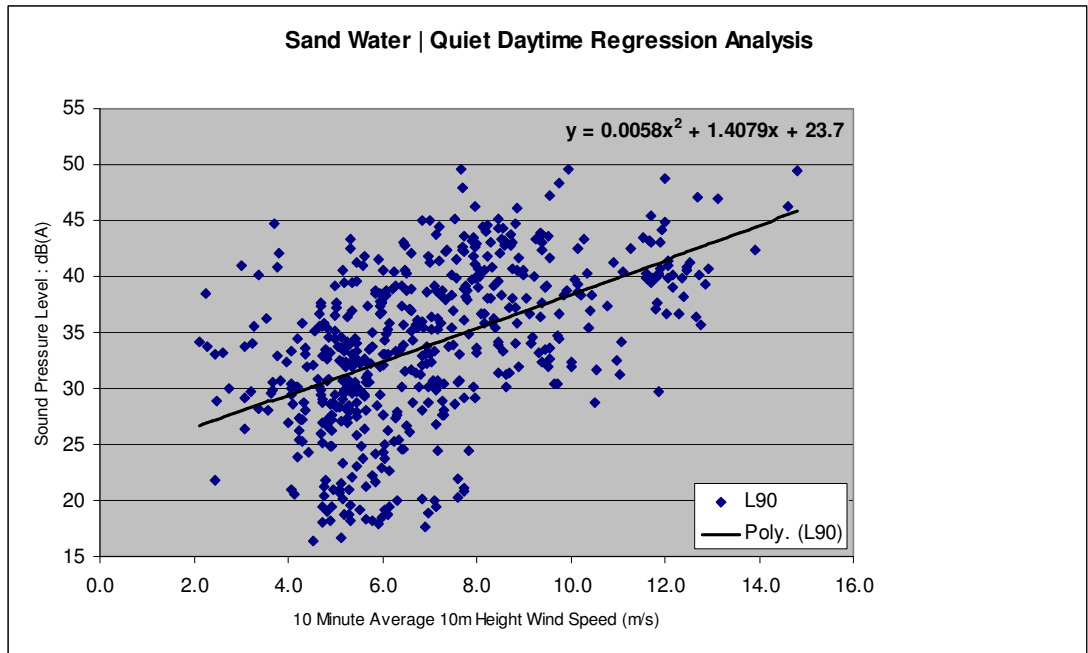


Chart 162.18 Sand Water, Night-time

