

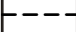



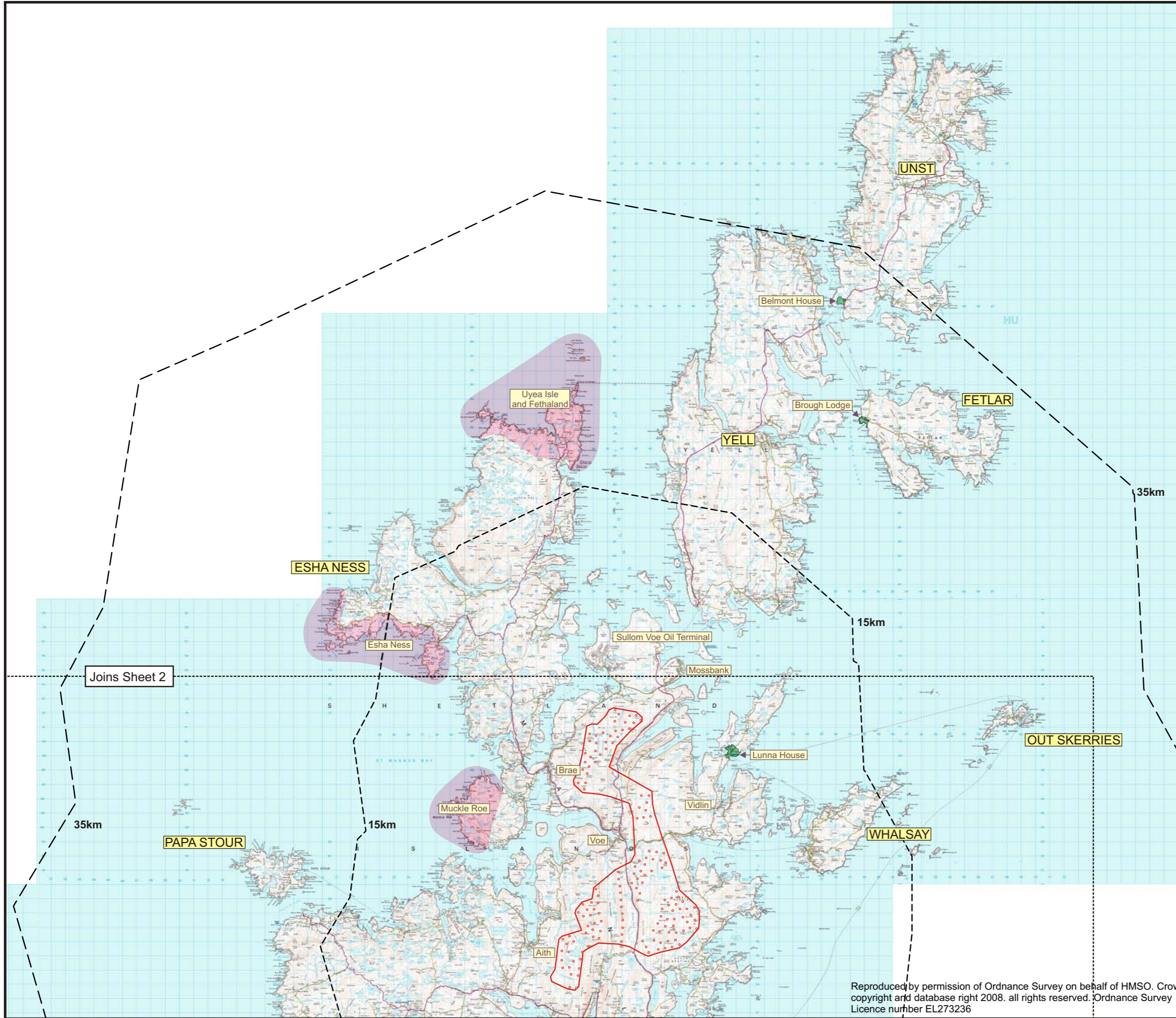
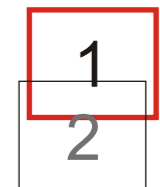


Figure 8.2.1

Key

-  Development Periphery
-  Turbines
-  15km Study Area
-  35km Study Area
-  National Scenic Area
-  Designed Landscapes



Reproduced by permission of Ordnance Survey on behalf of HMSO. Crown copyright and database right 2008. all rights reserved. Ordnance Survey Licence number EL273236

Client:	 Harnessing Shetland's natural resources	
Project:	<b>Viking Wind Farm</b>	
Title:	<b>Landscape Designations (Sheet 1 of 2)</b>	
Scale:	1:250 000	Date: Nov 2008

