

Legend

- Site Boundary
- Construction Compound
- Development Site 200m Buffer
- Development Site 500m Buffer

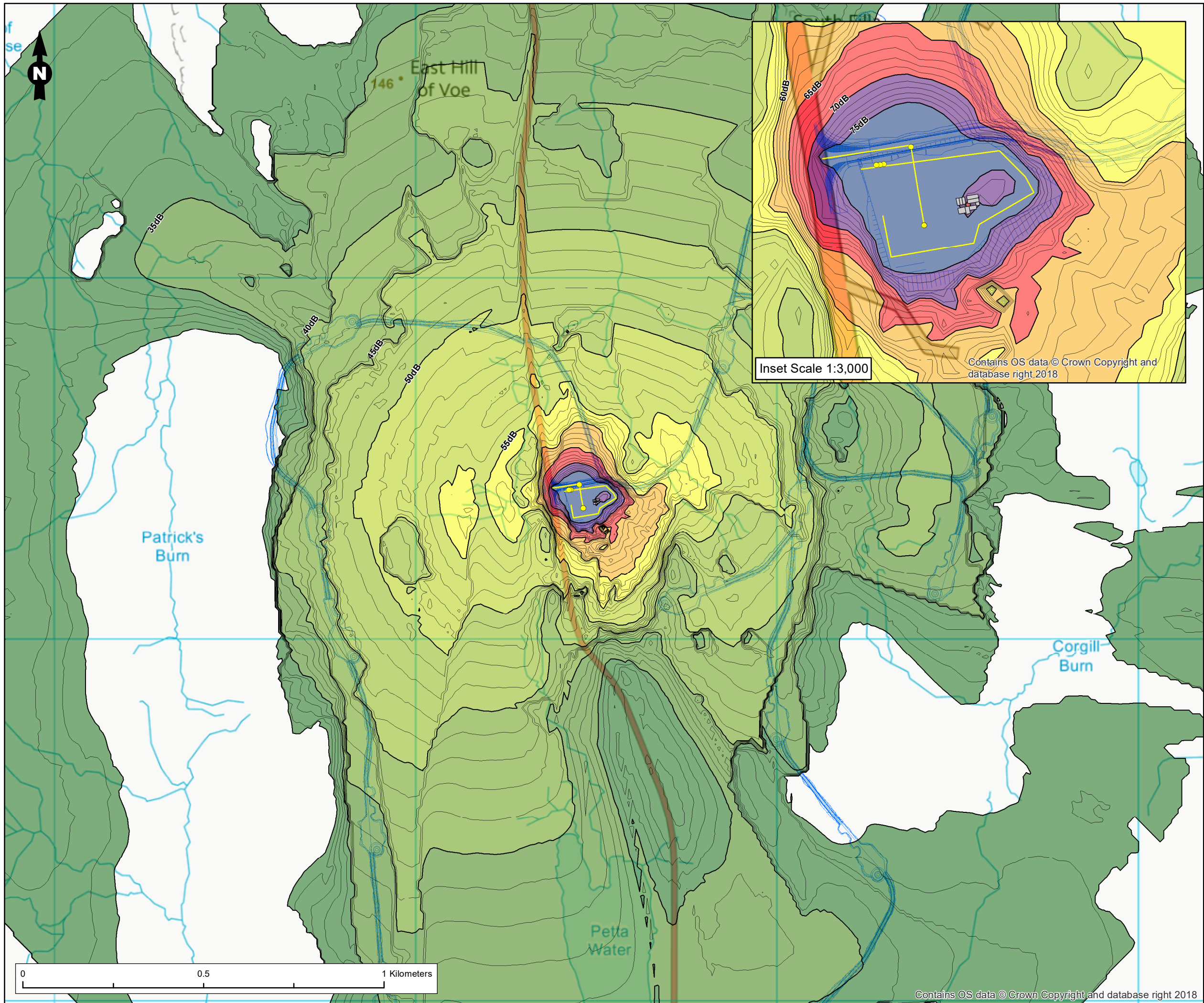
Territories in 2019

- CU, Curlew
- GJ, Greylag Goose
- GP, Golden Plover
- OC, Oystercatcher
- RG, Red Grouse
- RK, Redshank

Territories in 2018

- CU, Curlew
- DN, Dunlin
- GJ, Greylag Goose
- GP, Golden Plover
- NX, Great Skua
- OC, Oystercatcher

| | |
|---|-------------|
| Figure Title | |
| Figure 5.1: Breeding Bird Nominal Territory Centres | |
| Project Name | |
| Viking Wind Farm North Construction Compound | |
| Project Number | Figure No. |
| 1700001846 | 5.1 |
| Date | Prepared By |
| June 2019 | GM |
| Scale | Issue |
| 1:5,000 @A3 | 1 |
| Client | |
| | |



Legend

- Buildings
- Point Source
- Moving Point Sources
- Noise Contours (1dB Increments)
- Noise Contours (5dB Increments)

Predicted Noise Levels (dBA)

- 30-35
- 35-40
- 40-45
- 45-50
- 50-55
- 55-60
- 60-65
- 65-70
- 70-75
- 75 >
- 80-85

Noise contours modelled in accordance with BS5228:2009+A1:2014 at a height of 1.5m and displayed on a 10m by 10m grid. All noise sources assumed to be operating concurrently at maximum output. All levels shown as dB L_{Aeq(t)}.

Figure Title
Figure 6.1: Noise Contour Plot - Scenario 1

Project Name
Viking Wind Farm Construction North Compound

| | |
|------------------------------|-------------------|
| Project Number 1700001846 | Figure No. 6.1 |
| Date May 2019 | Prepared By MT |
| Scale 1:10,000 @A3 | Issue 2 |

Client

Contains OS data © Crown Copyright and database right 2018