



PHOTOMONTAGE VIEW

Figure A9.3.6b

Viewpoint Information

Grid Reference 448601E 1169302N
 Ground Height 17m
 Viewer Height 2m
 Included Angle 90°
 Viewing Distance 410mm
 Images digitally altered to the equivalent of 35mm camera with 50mm lens.

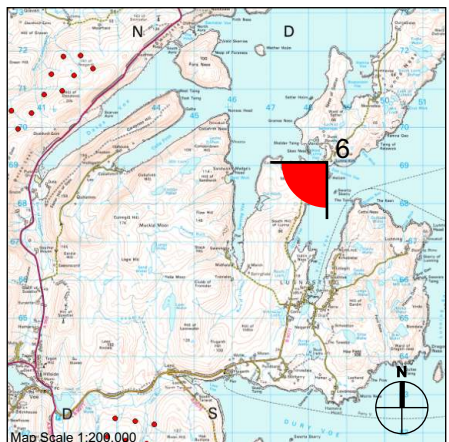
Layout Information

Based on Layout T127 - April 2010
 Blade Length 55m
 Hub Height 90m
 Nearest Visible Turbine 6.7km
 Number of Tips Visible 50°
 Number of Tips and Hubs Visible 39°
 Turbine Visibility 189° to 270°

*The information provided ignores the screening effects of forestry and other intervening objects.

Landscape Character Area

F5 - Scattered Settlement/ Crofting and Grazing Lands



Map Scale 1:200,000
 Reproduced from OS data with the permission of the controller of Her Majesty's Stationery Office. ©Crown Copyright. Licence number 200019009

Client:		
Project:	Viking Wind Farm	
Title:	Viewpoint 6 View from Lunna House	
Scale:	N.T.S.	Date: Jan 2009

Revised for ES Addendum - April 2010

