

Figure A9.3.6c



EXISTING VIEW

Viewpoint Information

Grid Reference 448601E 1169302N
 Ground Height 17m
 Viewer Height 2m
 Included Angle 90°
 Viewing Distance 300mm
 Images digitally altered to the equivalent of 35mm camera with 50mm lens.

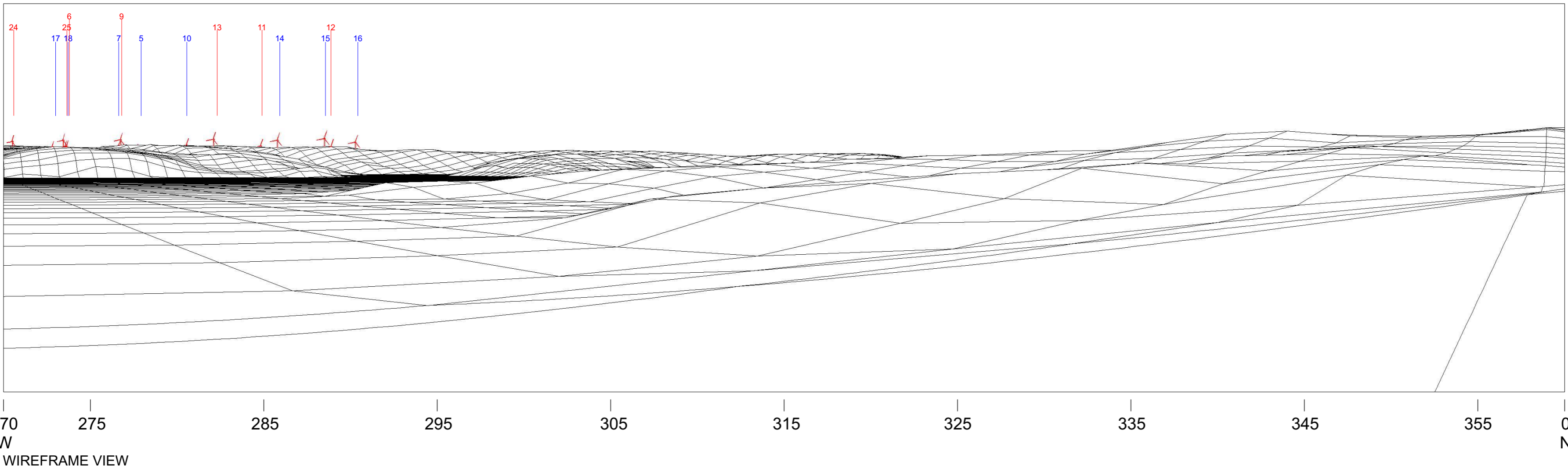
Layout Information

Based on Layout T127 - April 2010
 Blade Length 55m
 Hub Height 90m
 Nearest Visible Turbine 6.7km
 Number of Tips Visible 50*
 Number of Tips and Hubs Visible 39*
 Turbine Visibility 270° to 296°

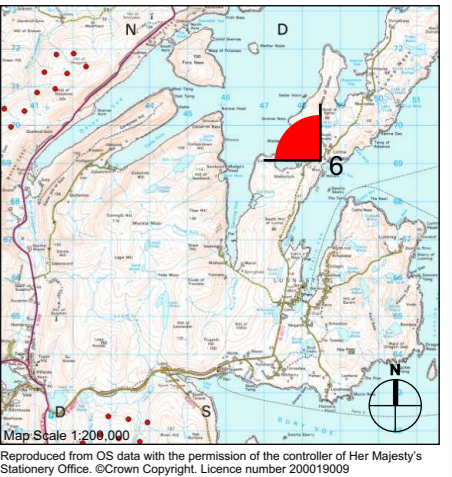
*The information provided ignores the screening effects of forestry and other intervening objects.

Landscape Character Area

F5 - Scattered Settlement/ Crofting and Grazing Lands



WIREFRAME VIEW



Client:			
Project:	Viking Wind Farm		
Title:	Viewpoint 6 View from Lunna House		
Scale:	N.T.S.	Date:	Aug 2009

Revised for ES Addendum - April 2010



Wireline diagram produced using OS Panorama (DTM) data. Contains Ordnance Survey data © Crown copyright and database right 2010