

APPENDIX 12.2 BACKGROUND NOISE MEASUREMENTS

Figure A12.1 Regression analysis of measured wind and noise data, Quiet Daytime, Hillside,dB

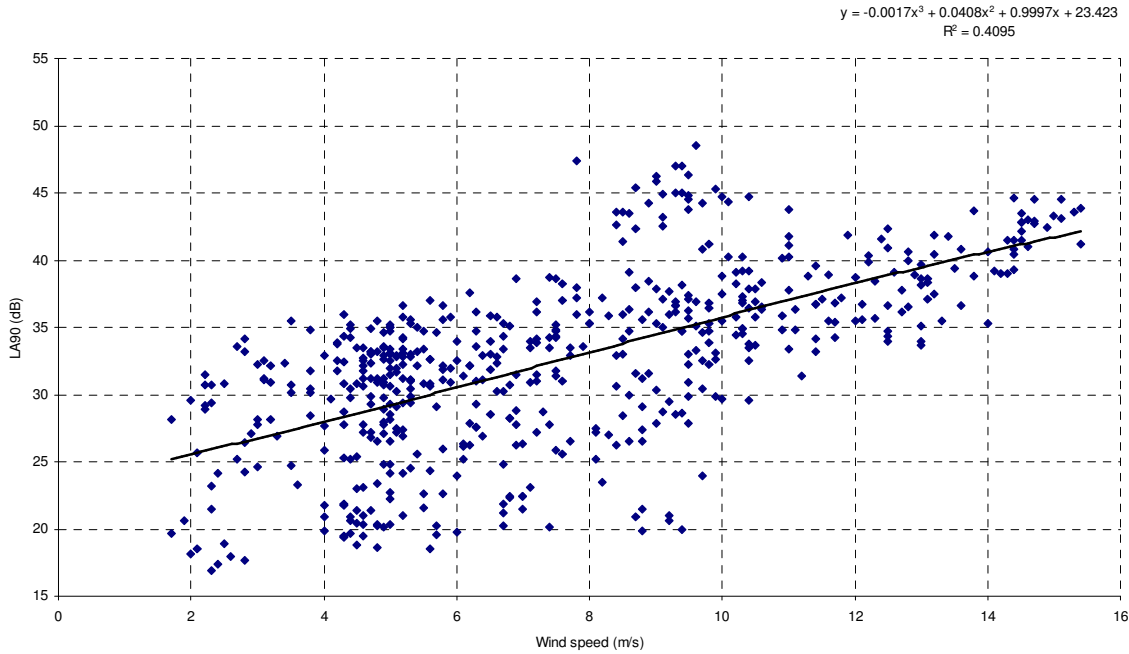


Figure A12.2 Regression analysis of measured wind and noise data, Night-time, Hillside,dB

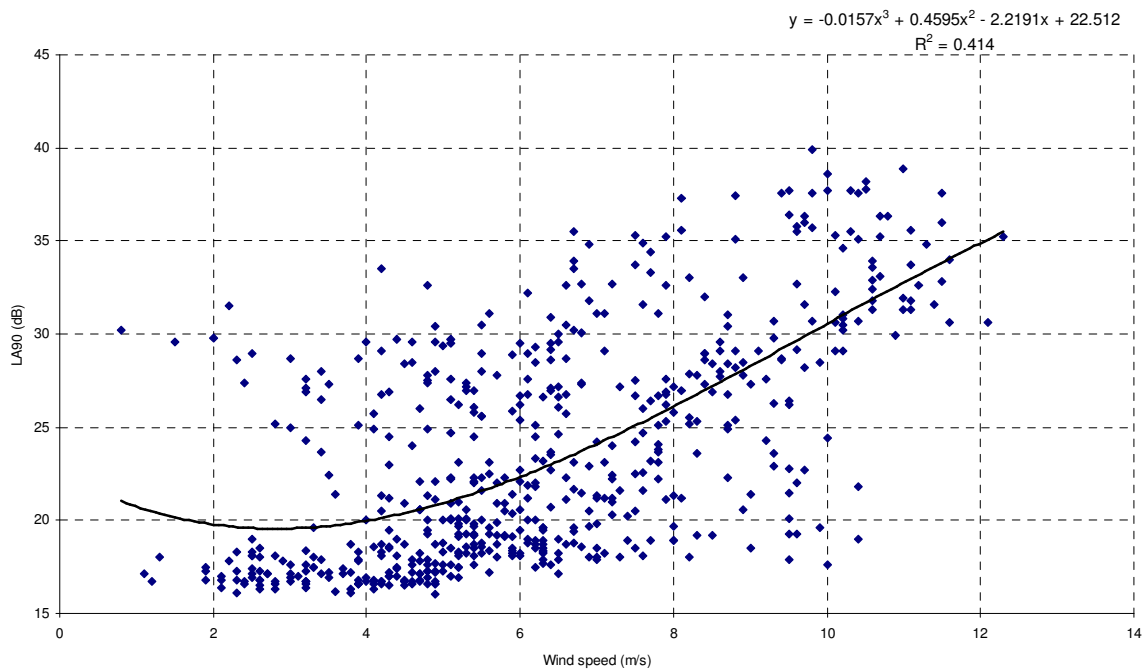


Figure A12.3 Regression analysis of measured wind and noise data, Quiet Daytime, Grutin,dB

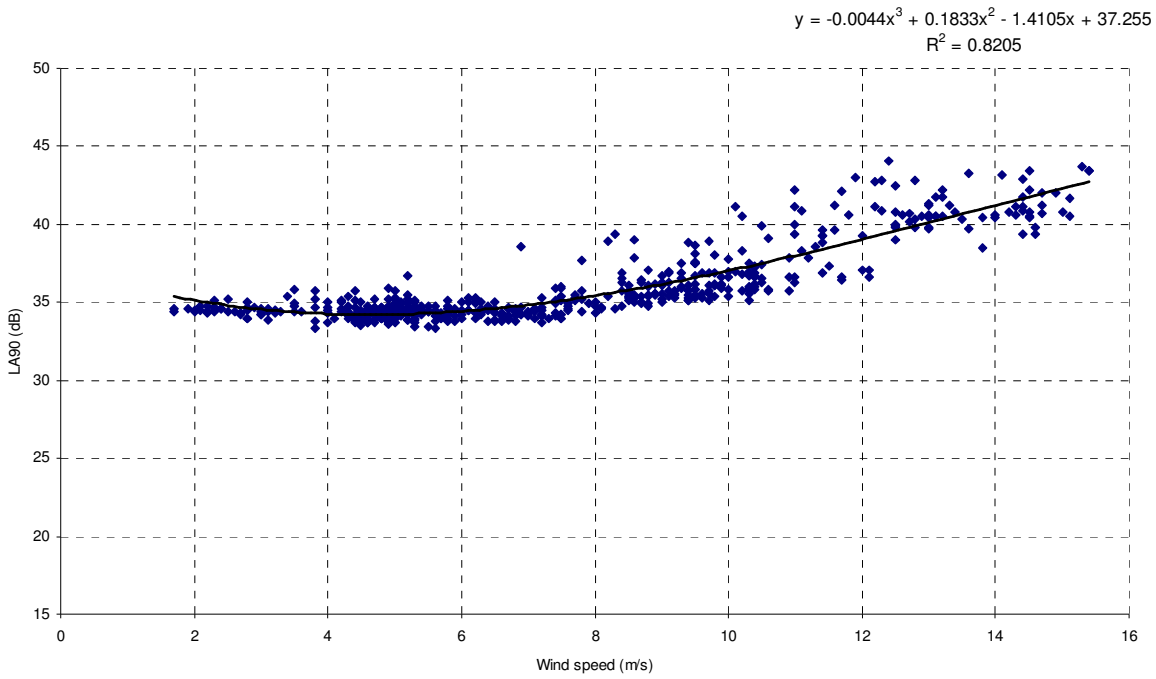


Figure A12.4 Regression analysis of measured wind and noise data, Night-time, Grutin,dB

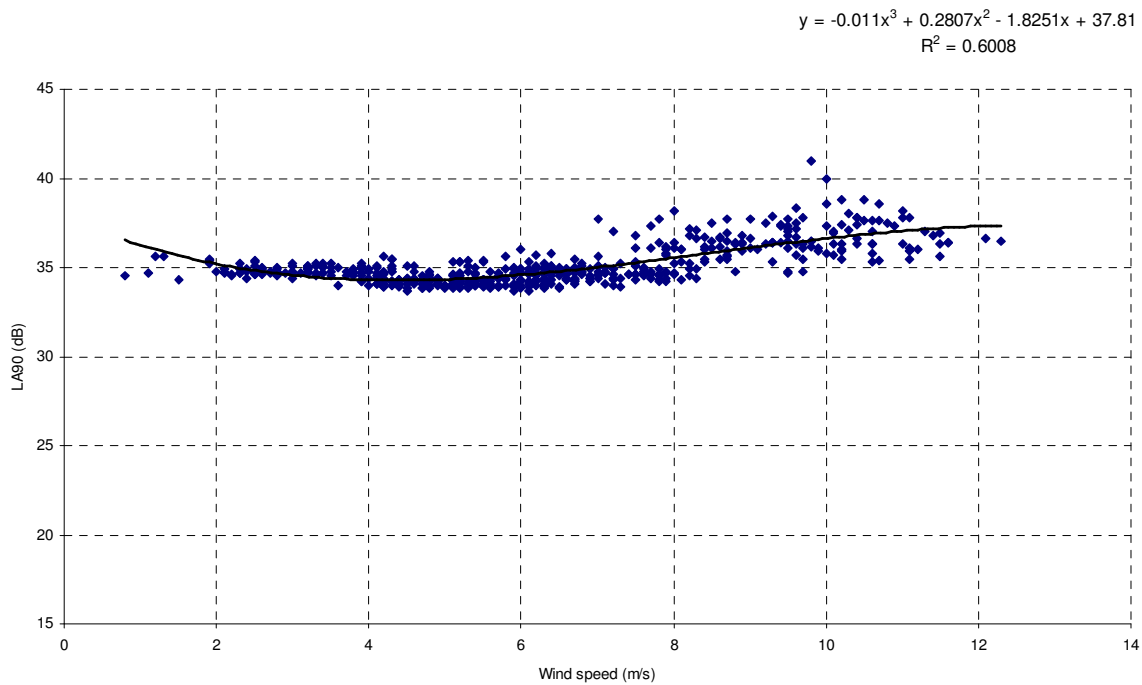


Figure A12.5 Regression analysis of measured wind and noise data, Quiet Daytime, Upper Kergord,dB

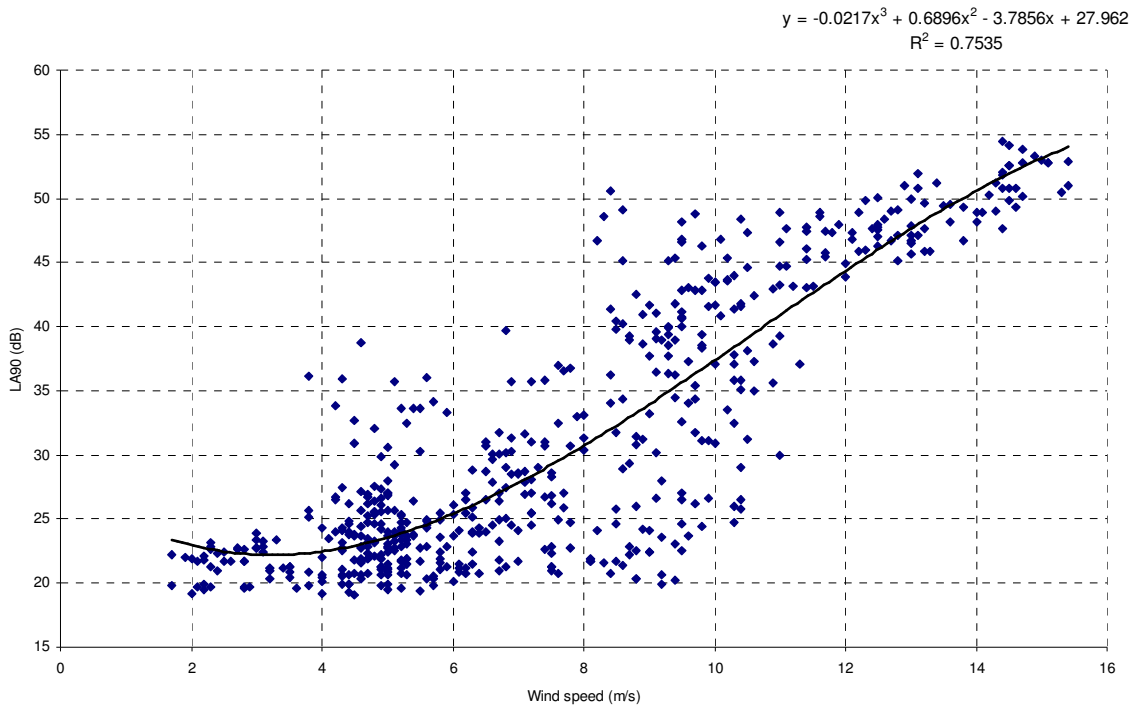


Figure A12.6 Regression analysis of measured wind and noise data, Night-time, Upper Kergord,dB

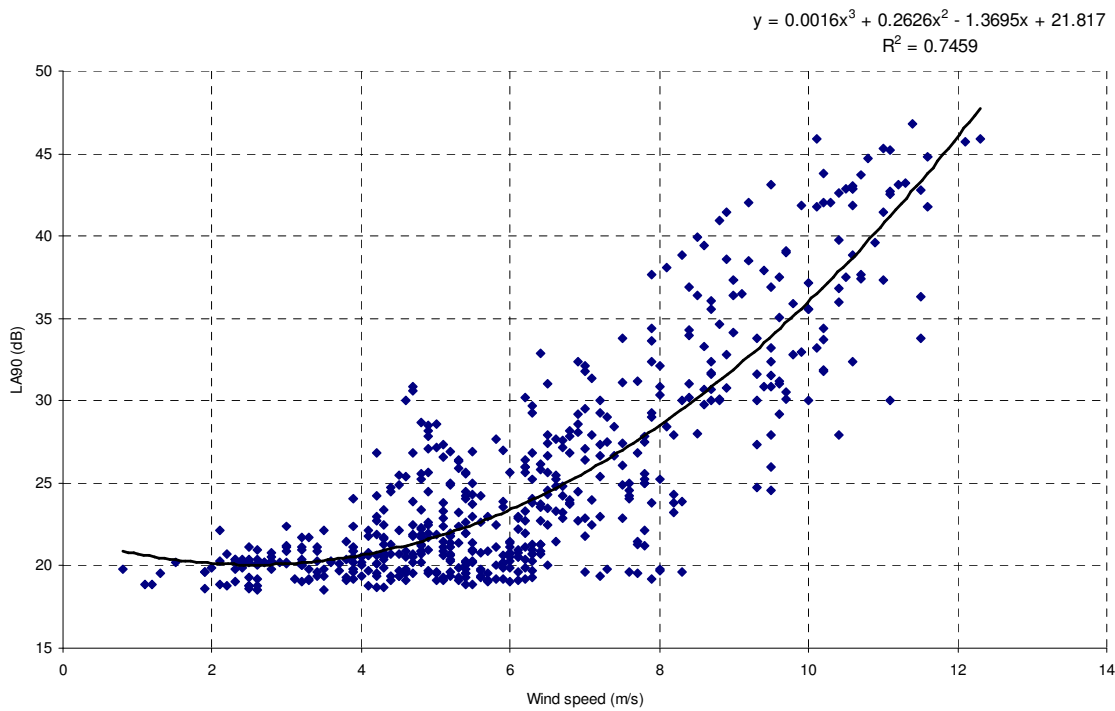


Figure A12.7 Regression analysis of measured wind and noise data, Quiet Daytime, Dury,dB

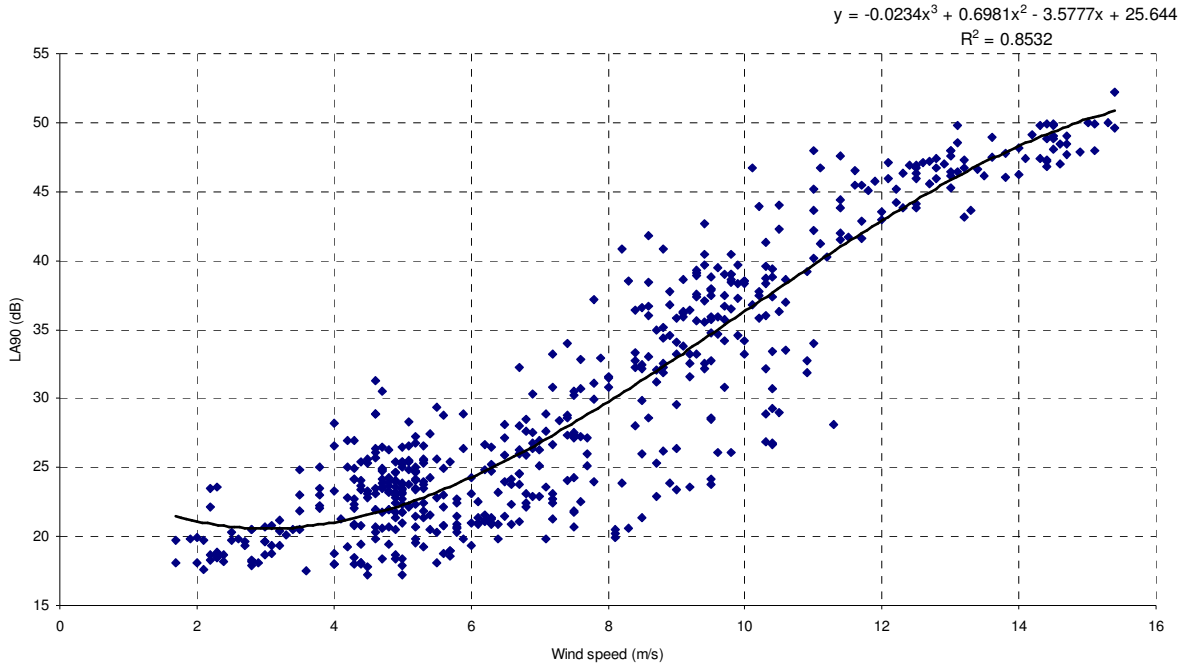


Figure A12.8 Regression analysis of measured wind and noise data, Night-time, Dury,dB

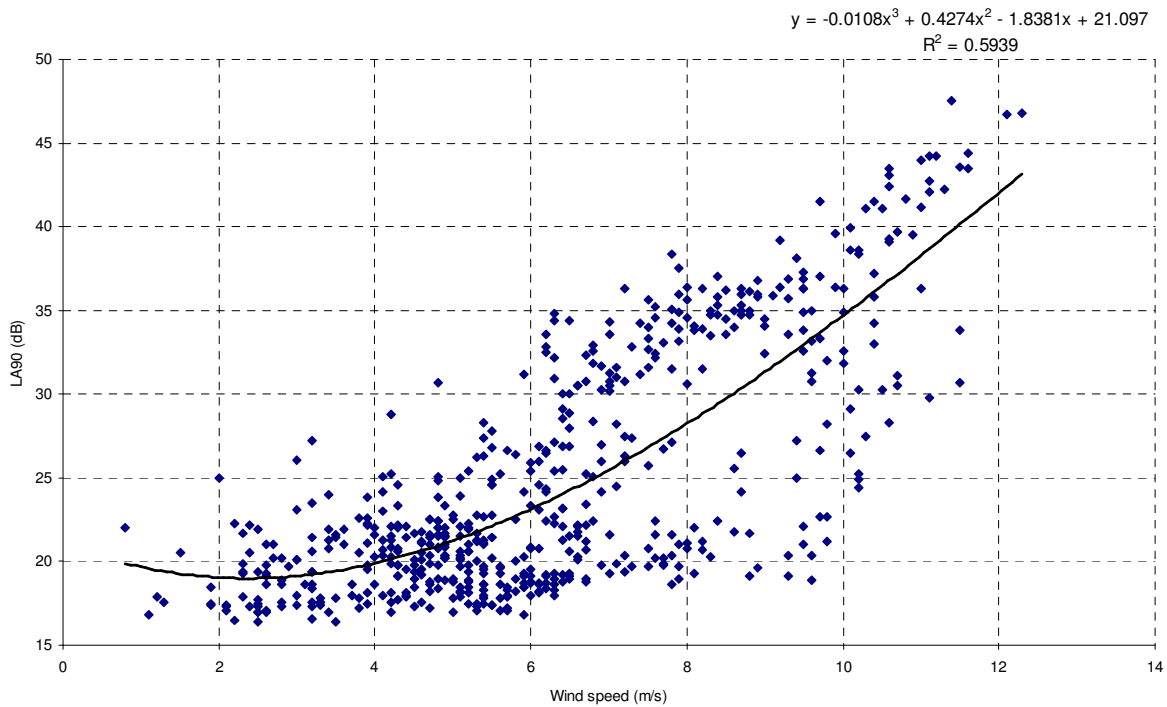


Figure A12.9 Regression analysis of measured wind and noise data, Quiet Daytime, Catfirth,dB

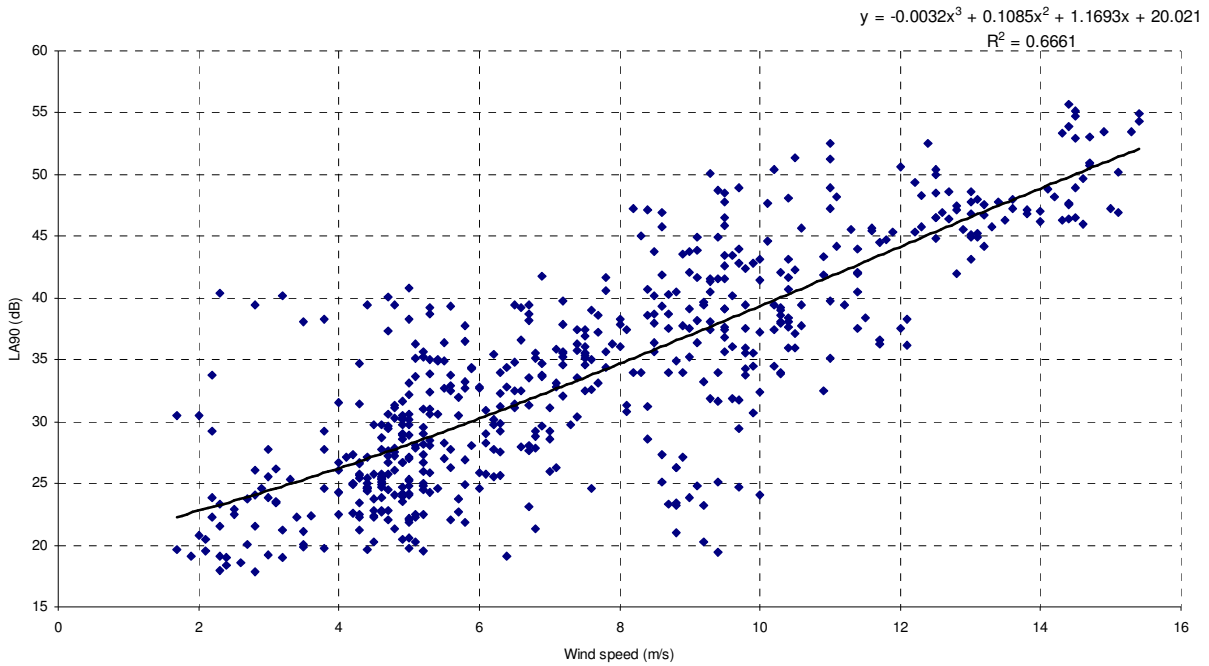


Figure A12.10 Regression analysis of measured wind and noise data, Night-time, Catfirth,dB

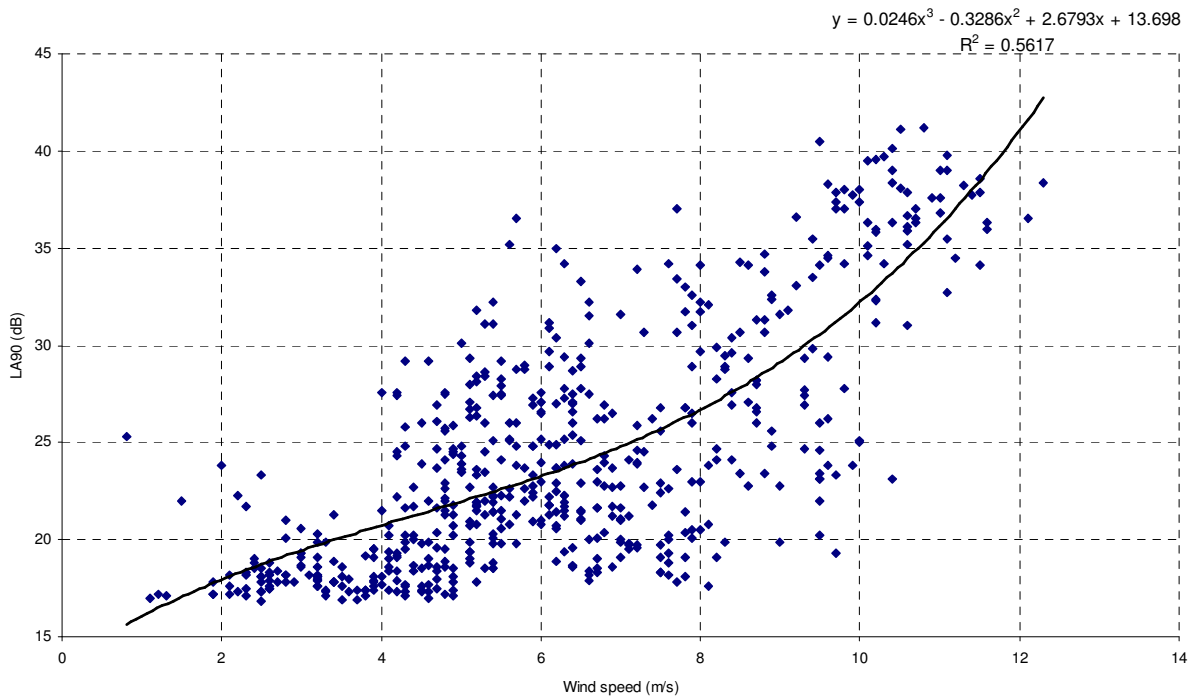


Figure A12.11 Regression analysis of measured wind and noise data, Quiet Daytime, B9075 Junction,dB

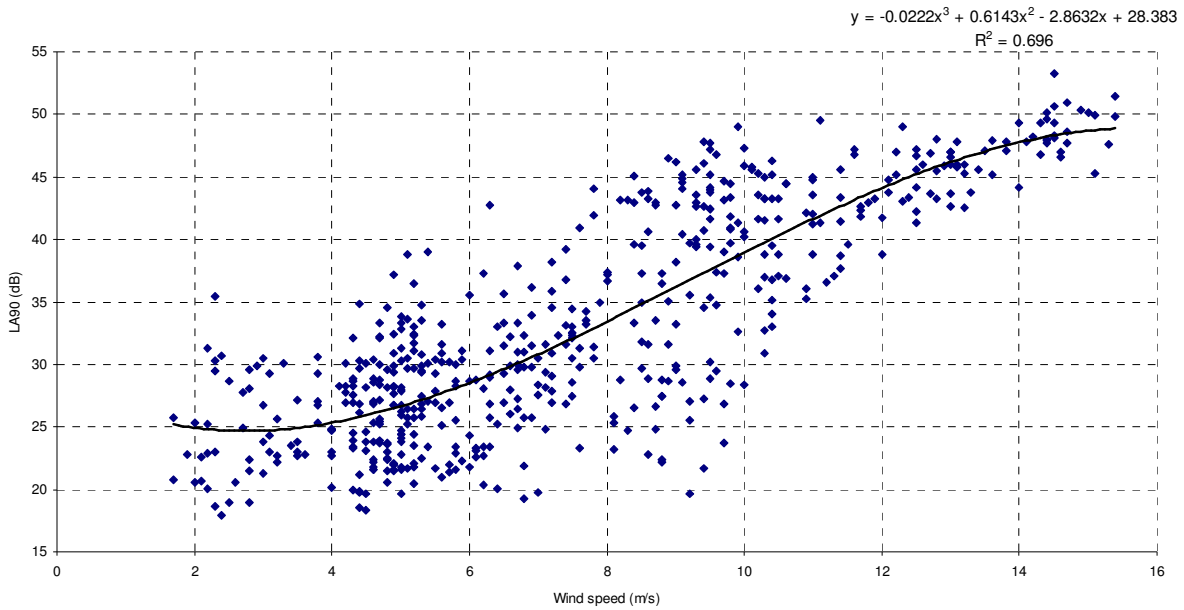


Figure A12.12 Regression analysis of measured wind and noise data, Night-time, B9075 Junction,dB

